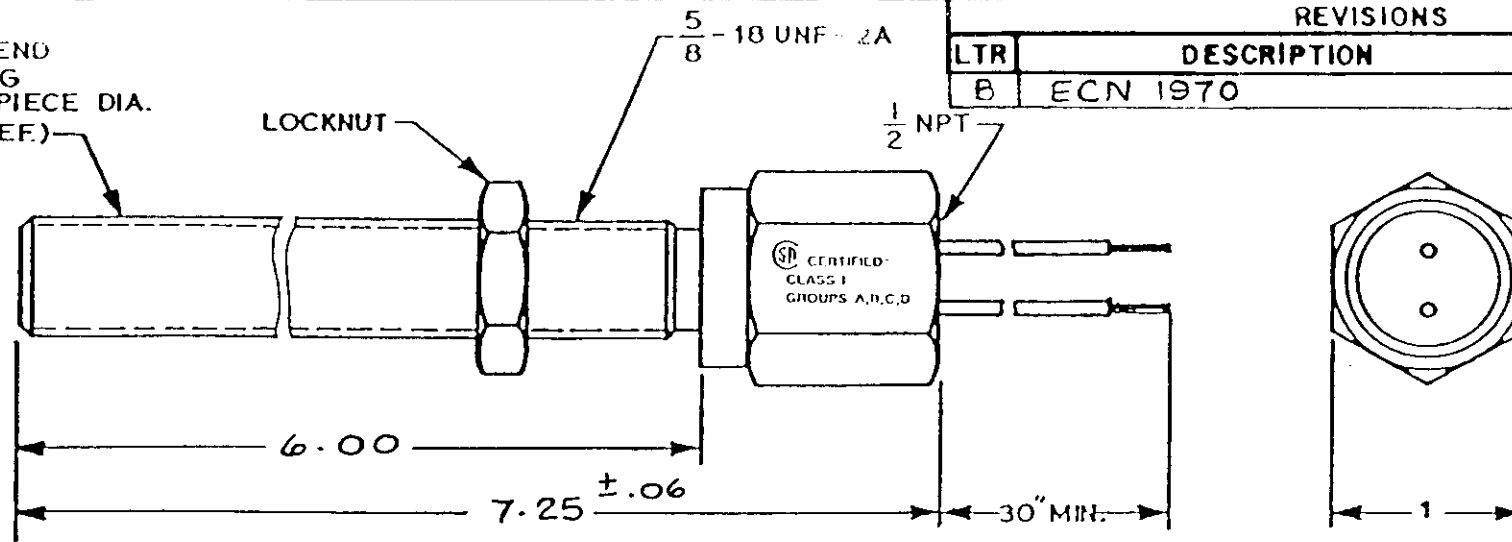


BLIND END HOUSING (POLE PIECE DIA. .094 REF.)



REVISIONS

| LTR | DESCRIPTION | DATE | APPD |
|-----|-------------|--------|------|
| B | ECN 1970 | 1/8/96 | Jac |


| TEMPERATURE RANGE | OUTPUT VOLTAGE (SEE NOTE 1) | DC RESISTANCE AT 75°F | INDUCTANCE AT 1 KHZ | OUTPUT LEADS (SEE NOTE 2) | INSULATION RESISTANCE AT 500 VDC |
|-------------------|-----------------------------|-----------------------|---------------------|---------------------------|----------------------------------|
| -65°F to +225°F | 23-33V p-p | 170-210 OHMS | 29 MH. NOM. | AWG 18 TEFLON | 100 MEGOHMS MIN. COIL TO HOUSING |

NOTES:

1. TESTED AT 1000 INCHES/SECOND WITH A .20 PITCH, 30 TOOTH GEAR, 0.005" CLEARANCE AND 100,000 OHMS.
2. WITH APPROACH OF FERROUS METAL, WHITE LEAD IS POSITIVE WITH RESPECT TO BLACK LEAD.
3. LEAD WIRE TEMPERATURE 400°F MAX.

CONSTRUCTION:

HOUSING- 303 STAINLESS STEEL
POTTING- EPOXY RESIN

 CERTIFIED CLASS I GROUPS A,B,C,D

UNLESS OTHERWISE SPECIFIED DIMENSIONS ARE IN INCHES TOLERANCES ARE

| FRACT. | DEC. | ANGLES |
|--------|-------------------------|--------|
| ± 1/64 | .XXX ± .008 XX ± .01 | ± 1/2° |

MATERIAL:
P/L A8008915

FINISH:

DYNALCO

| | | | |
|----------|----------|------|---------|
| DRAWN | I-VALDES | DATE | 7-15-90 |
| APPROVED | / | | 7-15-90 |

TITLE
OUTLINE & SPECIFICATIONS
M337 MAGNETIC PICKUP

| | | | |
|-------|------|----------------|------|
| SCALE | SIZE | DRAWING NUMBER | REV. |
| 1X | A | 8000337 | E |

This document, all information contained herein and all information related thereto, is the property of Dynalco Controls a unit of Mark Controls Corporation, is confidential to it and no part thereof nor any such information may be copied, disseminated or used in any manner whatsoever without the prior written consent of Dynalco and is to be returned to Dynalco upon request.

DO NOT SCALE THIS DRAWING