

Marine Products



Control
every move

Barksdale®

CONTROL PRODUCTS



Barksdale, Inc./Barksdale GmbH
A Subsidiary of Crane Co.

Barksdale – Future Engineering the future

Today's markets demand suppliers that are flexible and dynamic – for innovative new products, efficient management and comprehensive customer service.

Our products cover the full range of mechanical and electronic pressure, temperature, level and flow control for liquid and gaseous media. With premium production solutions, they provide the highest standards of performance and reliability for the most challenging control tasks in any manufacturing environment.

Barksdale has the advantage of over 50 years market experience, a global distribution network and is part of the Crane Co. family, one of the world's largest manufacturers of engineered products. These facts guarantee you a perfect solution.

The special environment of shipbuilding demands specific quality of the measurement products. Certified with the GL-approval, Barksdale products are used every day in all areas of the shipbuilding and onboard ships on the world's oceans.

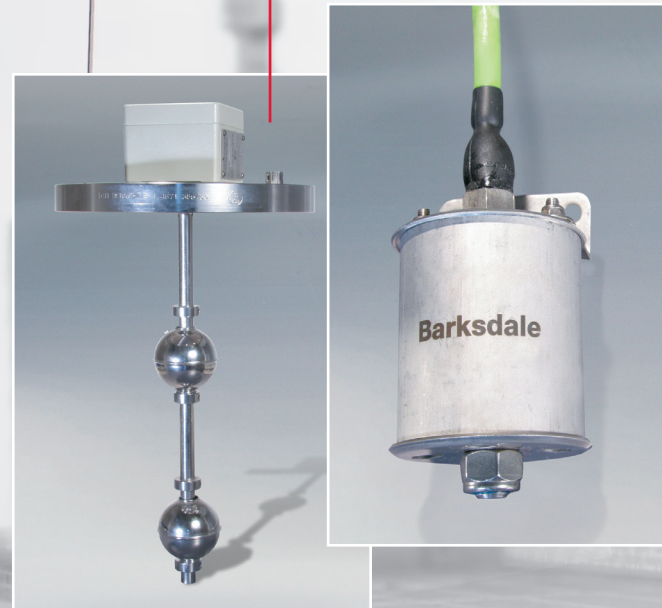
With our experience, know-how and our personal involvement we provide solutions to your desires and demands



by courtesy of HDW

Barksdale – Marine Products

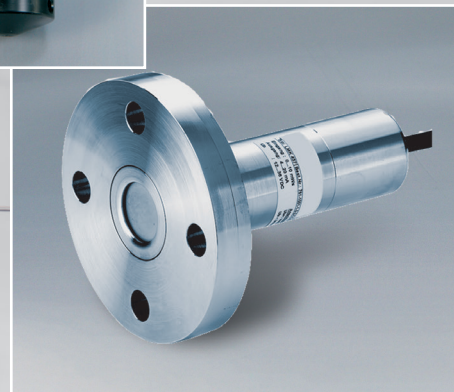
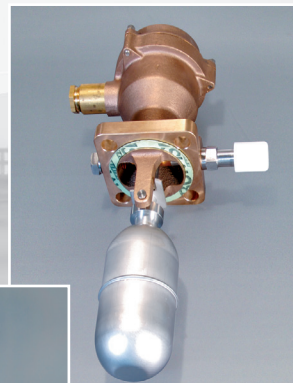
Level Switches



- ▶ Simple and multiple switches (SPST or SPDT reeds)
- ▶ Metal versions
- ▶ GL-approval
- ▶ Protection class IP54...IP68
- ▶ ATEX approval

Applications

Level and gauge measuring of tanks and vessels with liquids like fresh water, ballast water, fuels, oils etc., bilge controlling, pump controller



Electronic Level Measuring

- ▶ For continuous level and gauge measuring
- ▶ Measuring height 1.9 ft to 656.2 ft (0.6...200 m) WC
- ▶ Probe material CuNiFe alloy
- ▶ Resistant against seawater
- ▶ Linearity 0.35% rep. 0.25% f.s.o.
- ▶ Rugged, reliable and long term stability
- ▶ Option: EEx i ia IIC T4, Zone 0
- ▶ GL-approval

Applications

Continuous level and gauge measuring of tanks and vessel with liquids like fresh water, ballast water, fuels, oils etc. due to quasi flush diaphragm also for higher viscous media (heavy oil, sludges) suited, bilge controlling

Bourdon Tube Pressure Switch

- ▶ Ranges up to 18,129 psi (1250 bar)
- ▶ 1, 2, 3 setpoints
- ▶ Optional EEx d and EEx i versions
- ▶ For minimal to high contact loads
- ▶ Precise Bourdon tube sensor in stainless steel
- ▶ GL-approval



Applications

Hydraulic systems, high voltage switch gear



Electronic Pressure/ Temperature Switch

UDS 7 / UTS 7 with LED display

- ▶ For pressure monitoring or temperature monitoring with stainless steel diaphragm
- ▶ 2 switching outputs, 1 analog output
- ▶ Protection class IP65 (plug), IP67 (cable)
- ▶ Pressure ranges:
 - 14.5 psi to 145 psi (0...1 bar to 0...10 bar) gauge
 - 14.5 psi to 14,503 psi (-1...0 bar to 0...1000 bar) relative pressure
- ▶ Temperature ranges: -22 °F to 302 °F (-30 °C...+150 °C)
- ▶ Display: 4-digit Dot-Matrix-display, green, 0.2 in. (5 mm) height
- ▶ Microprocessor controlled, self-monitoring
- ▶ All parameters programmable via keypad
- ▶ Accuracy class 0.5% f.s.
- ▶ GL approval
- ▶ ATEX approval

Applications

Hydraulics and pneumatics, pump controller

Diaphragm Seal Piston Pressure Switches

- ▶ Pressure ranges from -14.5 psi to 609 psi (-1 bar to 42 bar)
- ▶ As piston switch up to 13,053 psi (900 bar)
- ▶ Optional with setpoint scale
- ▶ EEx i available and Ex-proof to CSA and UL for minimal to high contact loads
- ▶ GL-approval
- ▶ Rugged and economical

Applications

Hydraulics, pneumatics, water treatment systems, osmosis systems, control of bilge pumps and fire pumps

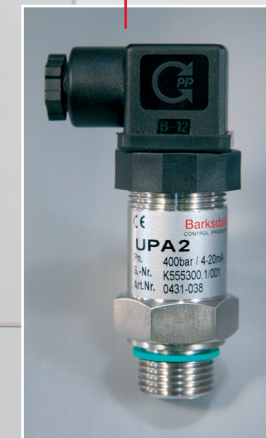
Electronic Pressure and Temperature Transducer

UPA3, UPA2 UTA3, UTF3

- ▶ For pressure and temperature monitoring
- ▶ Pressure ranges: 2.9 psi (0...200 mbar) up to 14,503 psi (0...1000 bar)
- ▶ Absolute and gauge
- ▶ Temperature ranges: -22 °F to 302 °F (-30 °C...+150 °C)
- ▶ Zero and span adjustable
- ▶ Rugged stainless steel version
- ▶ Protection class IP54/IP67
- ▶ ATEX-approval
- ▶ GL-approval

Applications

Pressure and temperature measuring and transmitting to separate monitoring systems, monitoring of parameters in hydraulic and pneumatic circuits



Shear-Seal® Directional Control Valve

- ▶ Original Shear-Seal® technology
- ▶ Sub-plate manifold mounting
- ▶ Heavy-industrial use with pressures up to 6,000 PSI
- ▶ Light-industrial use with pressures up to 2,000 PSI
- ▶ High velocity flow
- ▶ Tolerates contaminants
- ▶ Corrosion-resistant materials

Applications:

Shipboard hydraulic control systems, propeller pitch control, heavy equipment lifting, winches & pulleys



Tank Level Gauging USE 3000

- ▶ Continuous level monitoring with/without auxiliary power
- ▶ Incremental accuracy 157 in. (4 mm), 252 in. (6.4 mm) or 492 in. (12.5 mm) (screen)
- ▶ Metal versions
- ▶ Integrated transmitter option
- ▶ Protection class IP54/IP68
- ▶ ATEX-approval
- ▶ GL-approval

Applications

Continuous level and gauge measuring of tanks and vessel with liquids like fresh water, ballast water, fuels, oils etc., shipbuilding, offshore



Bypass Level Indicator

- ▶ Continuous level indication, purely mechanical, no power needed
- ▶ Temperatures up to 608 °F (+320 °C)
- ▶ Pressures up to 3,625 psi (250 bar)
- ▶ Metal versions
- ▶ Mounting tank side by-pass or tank top
- ▶ Optional transmitter 4...20 mA, also with ATEX available
- ▶ Optional analogue output signal for remote indication
- ▶ GL-approval

Applications

Replaces sightglasses, level monitoring where legibility up to 1,181 in. (30m) is needed, oil tanks



Mechanical Temperature Switch

- ▶ Measure ranges: -49 °F to 600 °F (-45 °C...+316 °C)
- ▶ For fluids and gases
- ▶ Temperature environments compensation
- ▶ For minimal to high contact loads
- ▶ EEx d and EEx i versions available

Applications

Power packs, heat exchanger, heat tracing, control of cooling water



Barksdale®

CONTROL PRODUCTS

CRANE Barksdale, Inc./Barksdale GmbH
A Subsidiary of Crane Co.



Barksdale Inc.

3211 Fruitland Ave.
Los Angeles,
USA
CA-90058-0843
Phone: +1 (323) 589-6181
Fax: +1 (323) 589-3463
www.barksdale.com

Barksdale GmbH

Dorn-Assenheimer Strasse 27
61203 Reichelsheim, Germany
Phone: +49 (0) 6035-949-0 (main office)
+49 (0) 6035-949-204 (sales)
Fax: +49 (0) 6035-949-111/ -113
E-mail: info@barksdale.de
www.barksdale.de

Barksdale China

33F Huaihai Plaza
1045 Central Huaihai Road
Shanghai 200031 P.R. China
Phone: +86 21 6127-3000
Fax: +86 21 6473-3298
Email: ChinaSales@barksdale.com
www.barksdaleChina.com